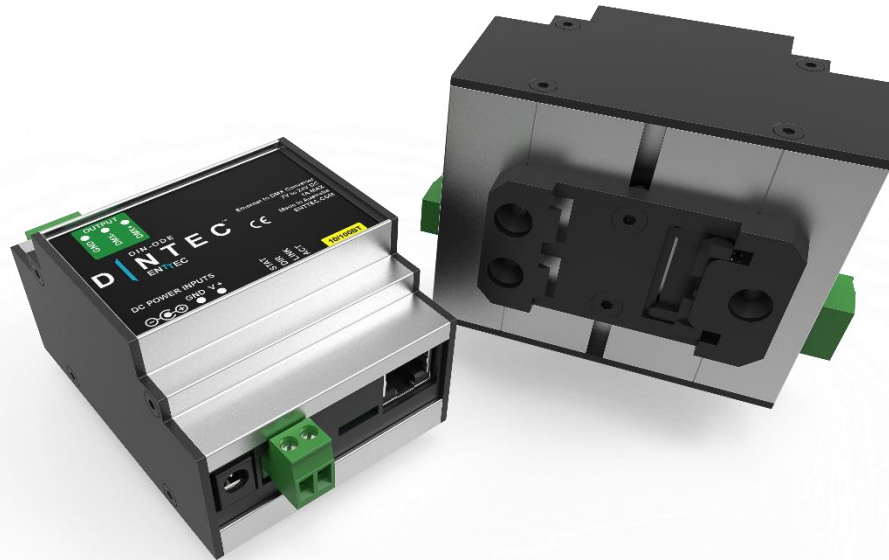


DIN Open DMX Ethernet MK2

RDM compliant DMX over Ethernet Gateway



Features

- 1 Universe Ethernet to DMX node (Output mode)
- 1 Universe DMX to Ethernet (Input mode)
- Easy to setup & update through any web browser
- Supports following DMX over Ethernet protocols:
 - Art-Net
 - Streaming ACN (sACN)
 - ESP
- Supports RDM over Art-Net (controller)
- Supports Art-Net 3
- HTP/LTP Merging support: up-to 2 DMX sources can be merged (if enabled).
- 1 RJ45 connector (10/100 Mbps)
- Static or Dynamic (DHCP) IP configuration (DHCP by default)
- Supports IEEE 802.3af PoE (Power over Ethernet) over RJ45 connector (**only on PoE model PN 71021**)
- DIN-Rail compatible
- Supports Broadcast or Unicast (Input mode)
- Machined aluminium box, made to last.
- Phoenix DIN Connectors

Basic Setup

Right out of the box, the DIN-ODE Mk2 is factory configured to be a DMX OUTPUT device, listening to the first Art-Net Universe (0x00). It is also set as a DHCP node, so you can plug it into your existing router, and it's good to go.

To make any changes to the configuration, you will need the IP address of DIN-ODE Mk2. ENTTEC provides a free App (available for Windows and Mac) called NMU, which will find the DIN-ODE on your network and display its IP address.

Using the IP address one can access the built-in web-interface inside the ODE via any modern web-browser. The web-interface allows the settings of the unit to be changed.

Once setup, any Art-Net/sACN/ESP enabled software/app or a lighting control/desk can be used to send DMX out of the ODE. For a list of recommended apps, please check the website www.enttec.com/din-ode2

Dip-Switch: There is a dip-switch inside the unit, accessible by removing the top cover. Switch 1, when engaged terminates the DMX output. Useful, if the unit is used at the end of a DMX chain, to terminate the DMX signal. By default, switch 1 is off. Switch 2 is not connected, and has no effect when engaged or not.

Technical Specifications

Item	Value
Input Voltage	7V to 24V DC
Maximum Current	300mA
Output Type	DMX or Data
Max Output Channels	1 universe (512ch)
Supported Protocols	ArtNet / sACN / DMX512A / RDM / ESP
Connectors	1x 3pin Screw Terminal for Data 1x 2pin Screw Terminal for Power 1x RJ45 connector for Ethernet
Environment	0°-50°C in non-condensing environment
Certifications	CE

Physical Details

Item	Value
Width	69mm / 2.71"
Height	57mm / 2.24"
Length	107mm / 4.21"
Weight	0.21 kg / 0.46 lbs
Shipped Weight	0.25 kg / 0.55 lbs

Due to continuous improvements and innovations of all ENTTEC products, specifications and features are subject to change without notice. For the latest version of this manual contact your local ENTTEC vendor.

Ordering Information

The ODE Mk2 and related products can be ordered from our website or through your ENTTEC dealer using the following part numbers.

Item	Name
70405	ODE MK2
70406	ODE MK2 with PoE
79111	Replacement Power Supply Kit
70041	Truss Mounting Kit (not included)
70029	3-pin female to 5-pin male adapter
70030	5-pin female to 3-pin male adapter

enttec.com

MELBOURNE AUS / LONDON UK / RALEIGH-DURHAM USA